



DURO™ FLEX

Linear LED Lighting

Full diffusion, precision light quality, and physical durability for reliably beautiful lighting. Suitable for every application, including indoor and outdoor, submerged in water, and in extreme weather conditions. Made in the USA with foreign parts.

<https://lqrc.de/bgaCBf>



Features

- Objectively superior CRI, Gamut, and Fidelity
- Seamless end-to-end mounting for limitless linear runs
- Top-bending and side-bending options with multiple output levels
- Water resistant for indoor and outdoor use, UV stabilized
- IP69 for submersible applications
- UL676 listed for pools, spas, and fountains
- NSF component approved

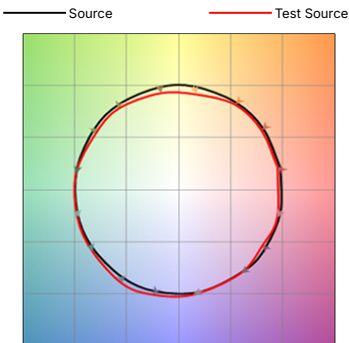
General Specifications

Voltage	24VDC
Dimmable	Dim to Dark - see driver options
Field Cuttable	No
Bend Radius	6 in.
Environment	Outdoor / Wet location (IP69)
Ambient Temperature	-4 - 122°F (-20 ~ 50°C)
Ambient Temperature (Deep Cold)	-40°F Min, Luminaire is required to be energized when temperature falls below -4°F
Ambient Temperature (Sauna)	180°F Max, <30% Humidity
Certification	UL 2108, UL 676 (with Mounting Channel), NSF
Limited Warranty	5 Years, 2 Years Deep Cold, 1 Year Sauna
Sustained Comprehensive Load Limit	1,000 PSI

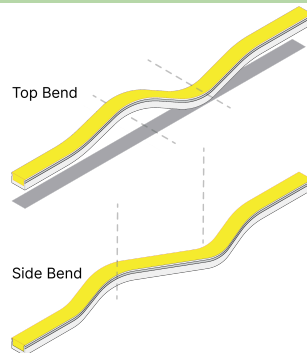
SKU Builder

1	Brand	2	Voltage	3	Bend Style/Light Engine	4	CCT	5	Length	6	Mounting
	LCI		24								
		24	(24VDC)	TE-DUF-130	(Top Bend)	24	(2400K)	—	(2 - 192 in.)	RTCL	(Rotating Clip)
				SE-DUF-250	(Side Bend)	27	(2700K)			90CL	(90° Clip)
				TE-DUF-400	(Top Bend)	30	(3000K)			SPCH	(Spine Channel)
						35	(3500K)			WMS	(Wire Management System)
										MTCH	(Mounting Channel)
										MTCL	(Mounting Clip)

Color Vector Graphic



Bend Options





DURO™ FLEX

Linear LED Lighting

Full diffusion, precision light quality, and physical durability for reliably beautiful lighting. Suitable for every application, including indoor and outdoor, submerged in water, and in extreme weather conditions. Made in the USA with foreign parts.

<https://qrco.de/bgaCBf>



1	LCI	Brand
	LCI	Lucetta CI

2	24	Voltage
	24	(24VDC)

www.LucettaCI.com

3	Light Engine	TE-DUF-130	SE-DUF-250	TE-DUF-400
	Wattage	1.8 W/ft.	5.6 W/ft.	4.6 W/ft.
	Max Run (ft.) (With Seamless Interconnection, On One Circuit)	55 ft.	20 ft.	30 ft.
	Max Run (ft.) (Single Piece)	26.25 ft., Straight Wire Only	16 ft.	20 ft., Straight Wire Only

4	CCT			
	Lumen Series	TE-DUF-130	SE-DUF-250	TE-DUF-400
	24 (2400K)	141 Lm/ft.	261 Lm/ft.	380 Lm/ft.
	27 (2700K)	141 Lm/ft.	266 Lm/ft.	409 Lm/ft.
	30 (3000K)	123 Lm/ft.	314 Lm/ft.	393 Lm/ft.
	35 (3500K)	133 Lm/ft.	320 Lm/ft.	410 Lm/ft.
	40 (4000K)	127 Lm/ft.	271 Lm/ft.	422 Lm/ft.

5	Length
	— (2 - 192 in.)



DURO™ FLEX

Linear LED Lighting

Full diffusion, precision light quality, and physical durability for reliably beautiful lighting. Suitable for every application, including indoor and outdoor, submerged in water, and in extreme weather conditions. Made in the USA with foreign parts.

<https://qrco.de/bgaCBf>

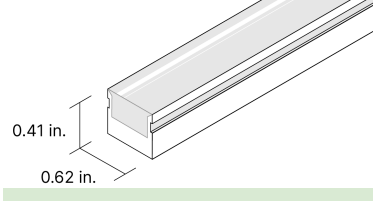


Mounting Channel - UL676 (MTCH)

6 Mounting

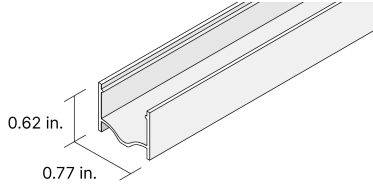
DURO™ FLEX

Without mounting accessories



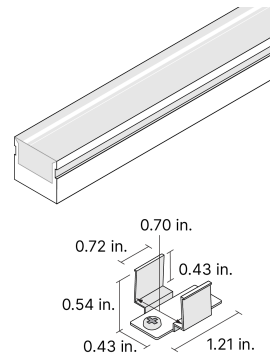
MTCH Mounting Channel - UL676

Straight and rigid lines of light



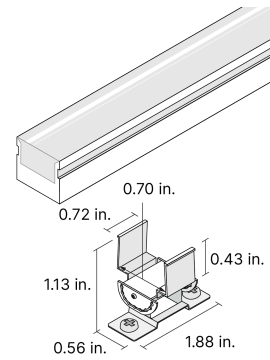
MTCL Mounting Clip

Single mounting point



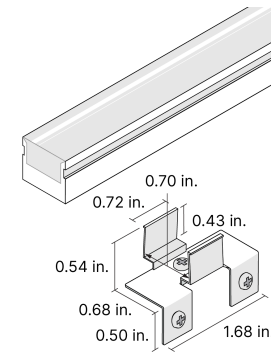
RTCL Rotating Clip

Single mounting point with adjustability



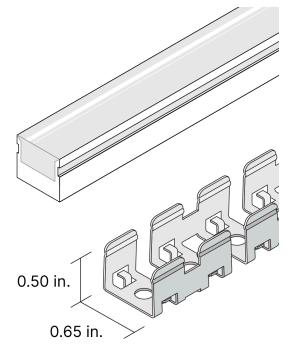
90CL 90° Clip

Single mounting point on ledge or support



SPCH Spine Channel

Mounting along a curve for architectural accents or lighting designs

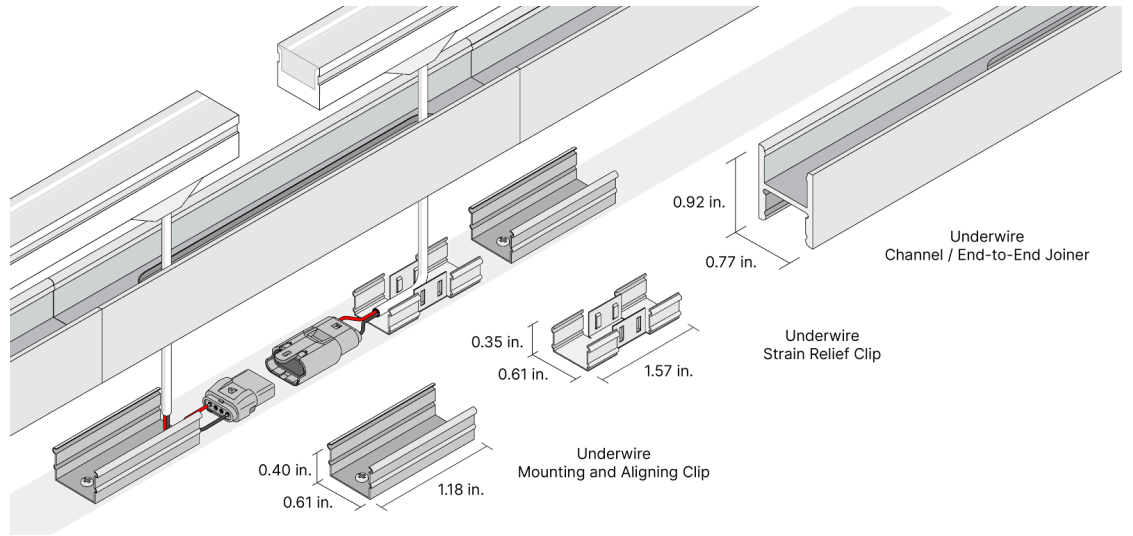


Wire Management System (WMS)

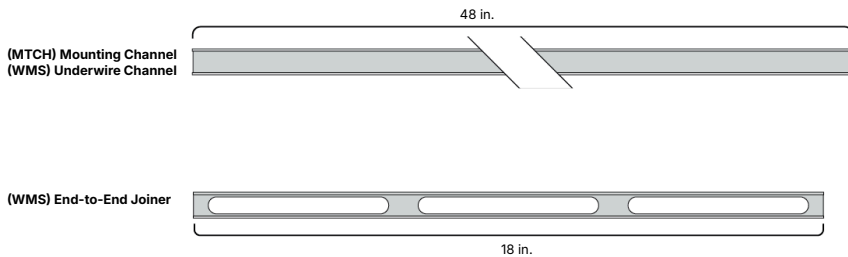
Seamless end-to-end mounting of sections of light with concealed wire management, including connections and wire chase capability.

Included with Wire Management System

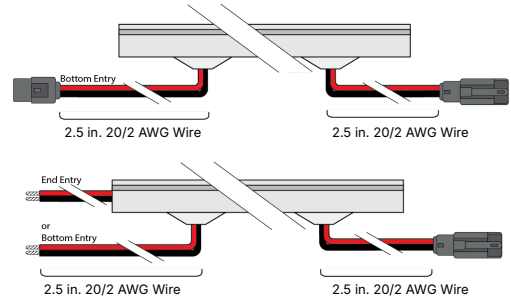
- (1) 48 inch, White Plastic, Underwire Channel
- (1) 18 inch, White Plastic, End-to-End Joiner
- (1) Underwire Channel Open End Cap
- (1) Underwire Channel Closed End Cap
- (1) Underwire Mounting and Aligning Clip
- (1) Underwire Strain Relief Clip



Channel Lengths (MTCH) / (WMS)



Connections





DURO™ FLEX

Linear LED Lighting

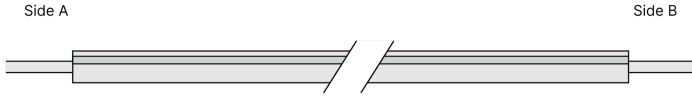
Full diffusion, precision light quality, and physical durability for reliably beautiful lighting. Suitable for every application, including indoor and outdoor, submerged in water, and in extreme weather conditions. Made in the USA with foreign parts.

<https://qrco.de/bgaCBf>

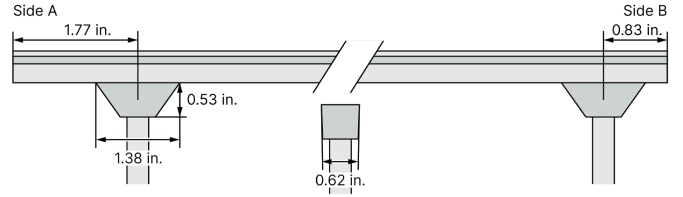


Wire Entry Options

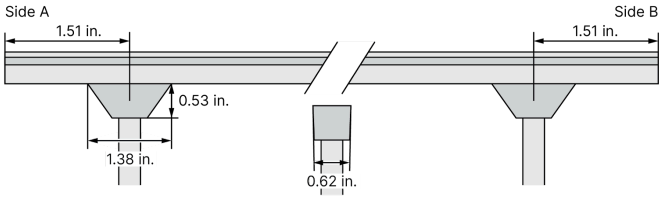
Top Bend - End Entry



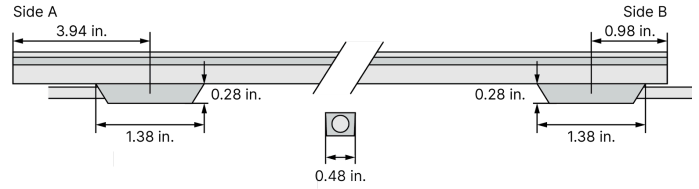
Side Bend - Bottom Entry



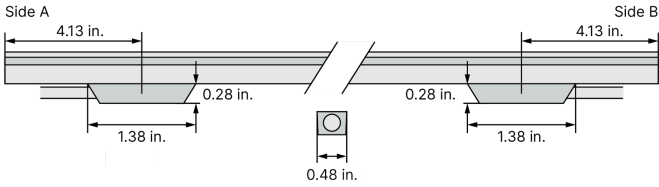
Top Bend - Bottom Entry



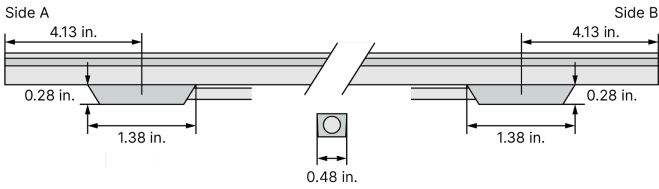
Side Bend - Bottom Entry - Wire Management



Top Bend - Bottom Entry - Wire Management



Top Bend - Interconnect Entry





DURO™ FLEX

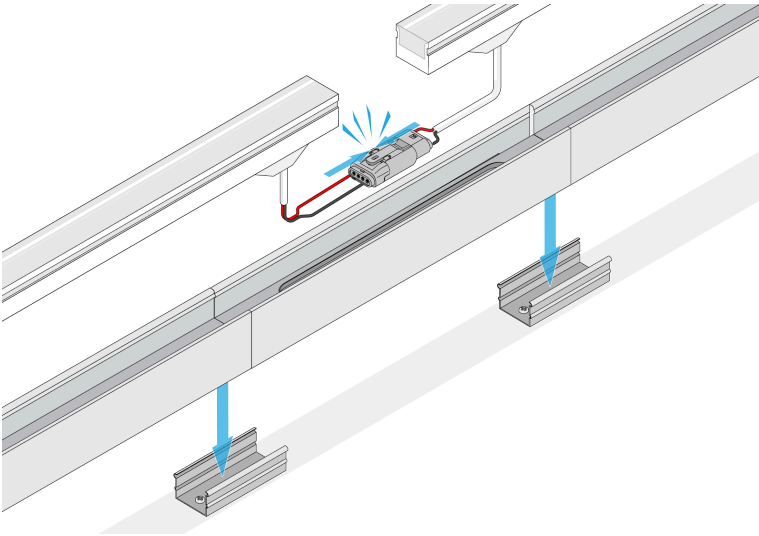
Linear LED Lighting

Full diffusion, precision light quality, and physical durability for reliably beautiful lighting. Suitable for every application, including indoor and outdoor, submerged in water, and in extreme weather conditions. Made in the USA with foreign parts.

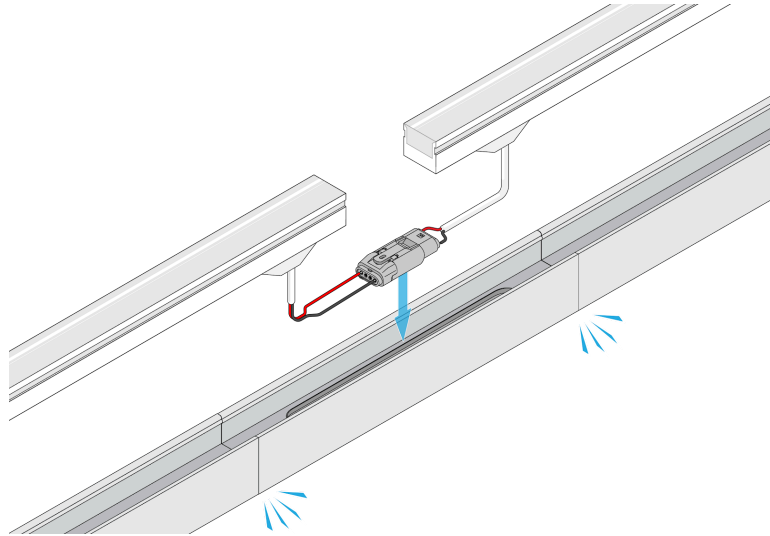
<https://qrco.de/bgaCBf>

Underwire Mounting

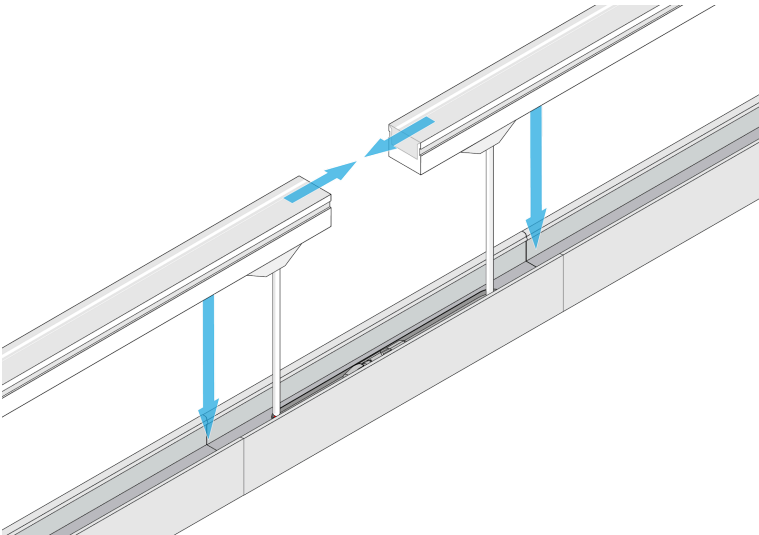
1 Fasten Connectors together and Underwire Channel to Mounting Clips



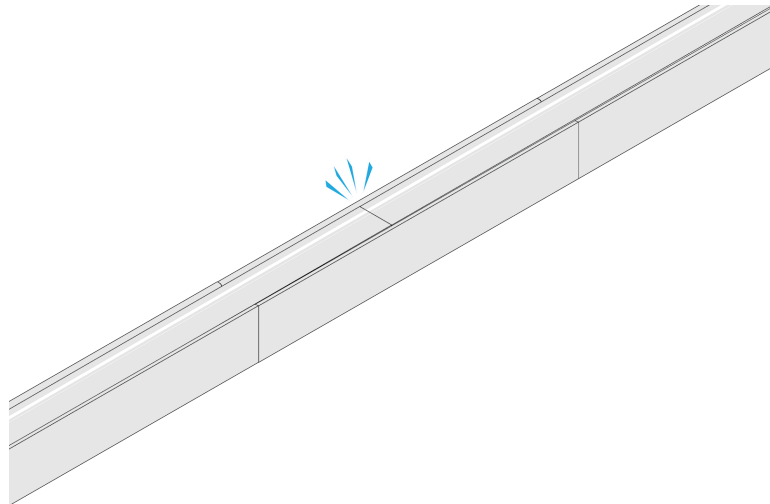
2 Tuck Connectors into End-to-End Joiner



3 Place within Underwire Channel



4 Complete





DURO™ FLEX

Linear LED Lighting

Full diffusion, precision light quality, and physical durability for reliably beautiful lighting. Suitable for every application, including indoor and outdoor, submerged in water, and in extreme weather conditions. Made in the USA with foreign parts.

<https://qrco.de/bgaCBf>



Recommended Power Supplies (Sold Separately)

BIANCO™ U Dimmable Driver

High-performance LED driver with smooth dimming, stable output, and universal compatibility with popular controls and systems.

- Universal dimming support (ELV, Triac, and 0-10V)
- No minimum load
- 100-277VAC universal input
- 0.1% Performance dimming



For more information, visit us at:

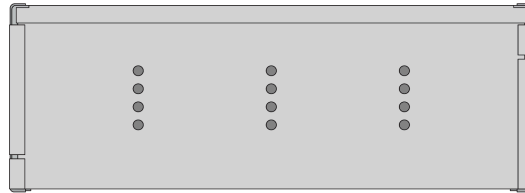
<https://qrco.de/bfWcPI>

SKU	General Specs	Input Voltage / Frequency	Output Voltage & Maximum Load	Minimum Load
LCI-BNCU-24V30W-J	Class 2, Dimmable 6.5 x 3.7 x 1.57 in.	100-277VAC, 50/60Hz	24V / 30W	None
LCI-BNCU-24V60W-J	Class 2, Dimmable 7.4 x 3.7 x 1.57 in.	100-277VAC, 50/60Hz	24V / 60W	None
LCI-BNCU-24V96W-J	Class 2, Dimmable 8.66 x 3.7 x 1.57 in.	100-277VAC, 50/60Hz	24V / 96W	None
LCI-BNCU-24V200W-J	Dimmable 10.24 x 4.13 x 1.77 in.	100-277VAC, 50/60Hz	24V / 200W	None
LCI-BNCU-24V300W-J	Dimmable 10.95 x 4.33 x 1.92 in.	100-277VAC, 50/60Hz	24V / 300W	None

VLM Series Constant Voltage Driver

Compact constant-voltage LED driver best utilized in dynamic applications.

- Compatible with PWM low voltage dimming systems
- Provides power for DMX integrated systems
- UL Listed junction box
- Small form factor



For more information, visit us at:

<https://qrco.de/bgZJJs>

SKU	General Specs	Input Voltage / Frequency	Output Voltage & Maximum Load	Minimum Load
LCI-VLM-24V60W-J	Class 2 8.19 x 2.94 x 1.31 in.	120 / 277VAC, 47 - 63Hz	24V / 60W	None
LCI-VLM-24V100W-J	Class 2 8.19 x 2.94 x 1.31 in.	120 / 277VAC, 47 - 63Hz	24V / 96W	None



DURO™ FLEX

Linear LED Lighting

Full diffusion, precision light quality, and physical durability for reliably beautiful lighting. Suitable for every application, including indoor and outdoor, submerged in water, and in extreme weather conditions. Made in the USA with foreign parts.

<https://qrco.de/bgaCBf>



Safety

UL Listed 2108 Low Voltage Lighting System / Low Voltage Luminaire. UL 1598 / CSA 250.008, UL 8750. UL 879 / CAN/CSAC22.2 no. 207M89. Certified for United States and Canada. File # E506975

UL 676 Underwater Luminaires / CAN/CSA C22.2 No. 891976 / UL 8750. This certification conforms to Article 680 and 682 of the National Electrical Code® for installation in swimming pools, fountains, spas, natural and artificially made bodies of water. File# E506975

NSF Sanitation Certified: NSF/ANSI Standard 2 2018 Food Equipment

Environment

IK11 Rated impact protection in accordance with IEC standards

Performance

Can be used to comply with TITLE 24 Part 6 High efficacy LED requirements - JA8-2016-E

LED chip data measured in accordance to IES LM-80-08.

Photometric & Colorimetry data measured in accordance to IES LM-79-08, in Elemental LED's Innovation Lab.

Safety / Warnings / Disclosures

Install in accordance with national and local electrical code regulations.

This product is intended to be installed and serviced by a qualified, licensed electrician.

Only use copper wiring. Use wires rated for at least 176°F (80°C) and certified for use with external connection of electrical equipment.

Each maximum run requires a dedicated power feed from the driver. Do not extend beyond the recommended maximum run length.

Tape light, attached wire leads, and additional extension cables, connectors, etc., are not rated for in-wall installation unless otherwise noted. Tape light and attached wire leads are field-cuttable.

Ensure applicable wire is installed between driver, fixture, and any controls in-between. When choosing wire, factor in voltage drop, amperage rating, and type (in-wall rated, wet location rated, etc.). Inadequate wire installation could overheat wires, and cause fire.

Do not install in environment where LED chips are exposed to direct sunlight as damage to the phosphor will occur.

Do not install in environment where excessive heat may exist (ex. close proximity to fireplace, etc.) See Ambient Temperature ratings

Do not install indoor LED tape light products in outdoor / wet location environments. Only wet location tape light models are rated for outdoor / wet locations.

Do not modify product beyond instructions or warranty will be void.

Tape light must be handled with care. Excessive handling, bending, and pressure may damage the product, voiding the warranty.

Actual color may vary from what is pictured on this sheet and other print materials due to the limitations of photographic processes.

We reserve the right to modify and improve the design of our fixtures without prior notice. We cannot guarantee to match existing installed fixtures for subsequent orders or replacements in regards to product appearance, CCT, or lumen output.

Warranty

5 Years: General Lighting

2 Years: Deep Cold

1 Year: Sauna

This warranty does not include the additional accessories referenced in this specification sheet. Complete warranty details for fixtures and additional accessories are available at www.diodeled.com/limited-warranty/ within the Policies section. For warranty related questions please contact product support.

Use of an unauthorized 3rd party driver with our lighting products may void the warranty.

Elemental LED, Inc. stands behind its products when they are used properly and according to our specifications. By purchasing our products, the purchaser agrees and acknowledges that lighting design, configuration and installation is a complex process, wherein seemingly minor factors or changes in layout and in-field adjustments can have a significant impact on an entire system. Choosing the correct components is essential. Elemental LED is able to work with the original purchaser to make an appropriate product selection to the extent of the limited information that the customer can provide, but it is virtually impossible for Elemental LED to design a system that foresees every unknown factor. For this reason, this Warranty does not cover problems caused by improper design, configuration or installation issues. Any statement from a Elemental LED employee or agent regarding a customer's bill of goods and/or purchase order is NOT an acknowledgment that the products purchased are designed and configured correctly. The purchase agrees and acknowledges that it is the customer's responsibility to adhere strictly to all information contained in the Product Specification Sheets.

There is often more than one way to design, configure and layout an LED lighting application properly to achieve the same lighting effect. Elemental LED strongly recommends that licensed professionals be used in the design and installation of lighting systems that include Elemental LED products. The specifications include important information that a designer and installer should carefully review and strictly follow. Qualified designers and certified and/or licensed installers, with access to the final installation environment, customer goals, and Elemental LED product specifications can make the requisite decisions appropriate for a successful finished lighting application.

- Lumen value measured in accordance to IES LM-79-08. LED chips have a luminous flux range with a tolerance of +/- 5%.
- Each maximum run requires a dedicated power feed from the driver. Do not extend beyond the recommended maximum run length. Max run may exceed Class 2 limit. Actual wattage may differ from calculated wattage due to voltage drop across run.
- Do not install product in an environment outside the listed ambient temperature. Exceeding the maximum ambient temperature may damage LED chips, reduce the total lamp life, lumen output, and/or adversely impact color consistency.
- Actual efficacy value is dependent to specified LED driver (power supply). An estimated efficacy value can be calculated as follows: Lumen value divided by average power consumption per foot.
- Operating temperature is measured according to the minimum and maximum ambient temperature environment.