



TRUE FOCUS™ Linear Grazer Fixture

Linear grazer fixture with precise beam control. Graze with near-zero glare in a small form factor.

<https://qrco.de/bfWcJV>



24
VDC



General Specifications

Voltage	24VDC
Visual Comfort	Near-Zero Glare (UGR<16 compliant) (10° only)
Dimensions	0.83 x 0.95 (W x H)
TM-30 (LM-80)	>50,000 hours
Environment	Indoor / Damp Location
Dimmable	Yes
Certification	UL Listed 2108
Limited Warranty	12 Year Limited Warranty

Features

- Crisp optical performance with 10, 30, and 60 degree beam angles
- X-TIR™ Linear Optics Technology for low glare
- Built to length in 1" increments, daisy-chain capable for long runs
- Rotating aiming bracket or flat mounting clip
- Objectively superior CRI, hue, and gamut
- 12 Year Limited Warranty

SKU Builder

1	Brand	2	Voltage	3	Model	4	Output	5	CCT	6	Length	7	Beam
	LCI		24								Length (in.)		
	www.LucettaCI.com		24 (24VDC)		TRUF (TRUE FOCUS™)		300 (~300 Lm/ft.)		24 (2400K)		Length (in.) (6 - 96 in.)		TF10 (10°)
							500 (~500 Lm/ft.)		27 (2700K)				TF30 (30°)
							800 (~800 Lm/ft.)		30 (3000K)				TF60 (60°)
							1000 (~1000 Lm/ft.)		35 (3500K)				
									50 (5000K)				
									63 (6300K)				

8	Louwer	9	Mounting
	FLT (Flat)		MC (Mounting Clip)
	ANG (Angled)		AB1 (Aiming Bracket)
			RC (Rotating Clip)
			HNG (Hanging Hardware)



TRUE FOCUS™

Linear Grazer Fixture

Linear grazer fixture with precise beam control. Graze with near-zero glare in a small form factor.

<https://qrco.de/bfWcJV>

LUCETTA®



12/24
VDC

1	LCI	Brand
LCI Lucetta CI		

www.LucettaCI.com

2	24	Voltage
24 (24VDC)		

3	TRUF	Model
TRUF (TRUE FOCUS™)		

4 **Output**

Specifications	300			10°			30°			60°		
	Wattage	Peak Center Beam Candle Power	Max Run Length (per power feed)	Center Beam Foot Candles	Beam Width	Center Beam Foot Candles	Beam Width	Center Beam Foot Candles	Beam Width	Center Beam Foot Candles	Beam Width	
Wattage	2.8W/ft.			1 foot	979	0.2 feet	1 foot	552	0.5 feet	1 foot	264	1.1 feet
Peak Center Beam Candle Power	979 cd			5 feet	40	0.9 feet	5 feet	22	2.4 feet	5 feet	11	5.4 feet
Max Run Length (per power feed)	41 ft.			10 feet	10	1.9 feet	10 feet	6	4.9 feet	10 feet	3	10.8 feet
				15 feet	4	2.8 feet	15 feet	2	7.3 feet	15 feet	1	16.2 feet

Specifications	500			10°			30°			60°		
	Wattage	Peak Center Beam Candle Power	Max Run Length (per power feed)	Center Beam Foot Candles	Beam Width	Center Beam Foot Candles	Beam Width	Center Beam Foot Candles	Beam Width	Center Beam Foot Candles	Beam Width	
Wattage	4.6W/ft.			1 foot	1625	0.2 feet	1 foot	972	0.5 feet	1 foot	468	1.1 feet
Peak Center Beam Candle Power	1625 cd			5 feet	65	0.9 feet	5 feet	39	2.5 feet	5 feet	19	5.4 feet
Max Run Length (per power feed)	30 ft.			10 feet	16	1.7 feet	10 feet	10	5 feet	10 feet	5	10.8 feet
				15 feet	7	2.6 feet	15 feet	4	7.5 feet	15 feet	2	16.2 feet

Specifications	800			10°			30°			60°		
	Wattage	Peak Center Beam Candle Power	Max Run Length (per power feed)	Center Beam Foot Candles	Beam Width	Center Beam Foot Candles	Beam Width	Center Beam Foot Candles	Beam Width	Center Beam Foot Candles	Beam Width	
Wattage	7.2W/ft.			1 foot	2342	0.2 feet	1 foot	1358	0.5 feet	1 foot	705	1.1 feet
Peak Center Beam Candle Power	2342 cd			5 feet	94	0.9 feet	5 feet	54	2.5 feet	5 feet	28	5.4 feet
Max Run Length (per power feed)	19 ft.			10 feet	23	1.7 feet	10 feet	14	5 feet	10 feet	7	10.8 feet
				15 feet	10	2.6 feet	15 feet	6	7.5 feet	15 feet	3	16.2 feet

Specifications	1000			10°			30°			60°		
	Wattage	Peak Center Beam Candle Power	Max Run Length (per power feed)	Center Beam Foot Candles	Beam Width	Center Beam Foot Candles	Beam Width	Center Beam Foot Candles	Beam Width	Center Beam Foot Candles	Beam Width	
Wattage	9.5W/ft.			1 foot	2516	0.2 feet	1 foot	1295	0.5 feet	1 foot	668	1.1 feet
Peak Center Beam Candle Power	2516 cd			5 feet	101	0.8 feet	5 feet	51.8	2.7 feet	5 feet	26.7	5.6 feet
Max Run Length (per power feed)	24 ft.			10 feet	25.2	1.6 feet	10 feet	13	5.5 feet	10 feet	6.68	11.2 feet
				15 feet	11.2	2.4 feet	15 feet	5.76	8.2 feet	15 feet	2.97	16.8 feet

5	CCT
	24 (2400K)
	27 (2700K)
	30 (3000K)
	35 (3500K)
	50 (5000K)
	63 (6300K)

6	Length
Length (in.)	(6 - 96 in.)



TRUE FOCUS™ Linear Grazer Fixture

Linear grazer fixture with precise beam control. Graze with near-zero glare in a small form factor.

<https://qrco.de/bfWcJV>

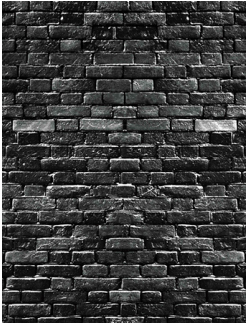
LUCETTA®



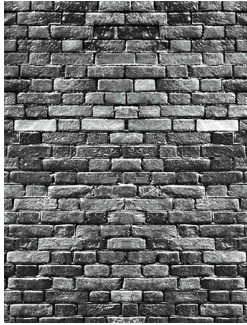
12/24
VDC

7 Beam Angle

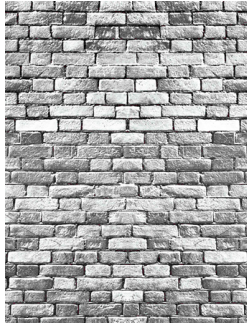
TRUE FOCUS™ 10°



TRUE FOCUS™ 30°



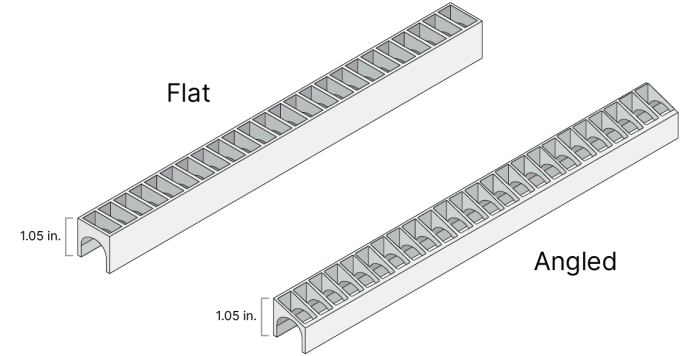
TRUE FOCUS™ 60°



8 Louver

FLT (Flat)

ANG (Angled)



9 Mounting

MC (Mounting Clip)

AB1 (Aiming Bracket)

RC (Rotating Clip)

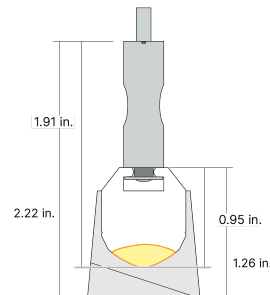
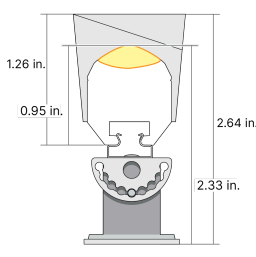
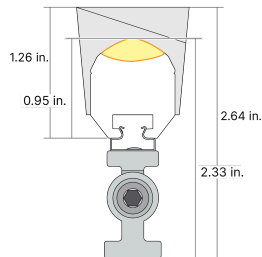
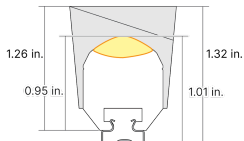
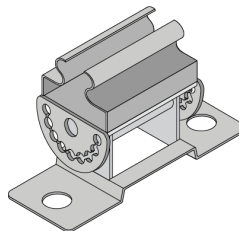
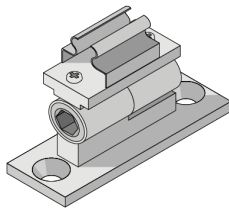
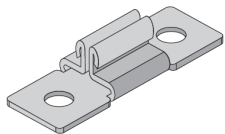
HNG (Hanging Hardware)

Mounting Clip

Aiming Bracket

Rotating Clip

Hanging Hardware





TRUE FOCUS™ Linear Grazer Fixture

Linear grazer fixture with precise beam control. Graze with near-zero glare in a small form factor.

<https://qrco.de/bfWcJV>

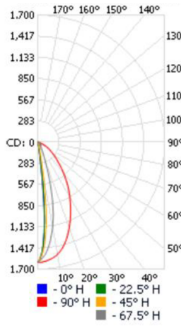
LUCETTA®



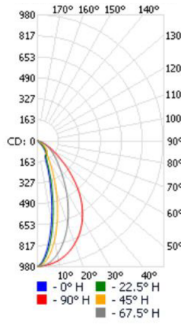
12/24
VDC

Photometrics

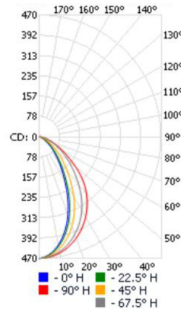
10° Polar Candela Distribution



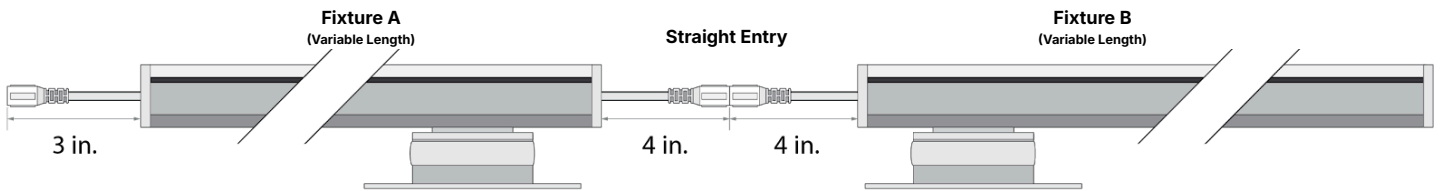
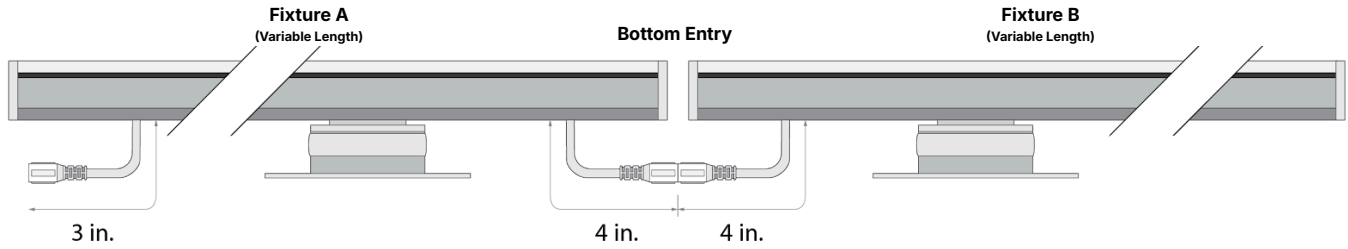
30° Polar Candela Distribution



60° Polar Candela Distribution



Daisy Chain Installation





TRUE FOCUS™
Linear Grazer Fixture

Linear grazer fixture with precise beam control. Graze with near-zero glare in a small form factor.

<https://qrco.de/bfWcJV>

LUCETTA®



12/24
VDC

Recommended Power Supplies (Sold Separately)

BIANCO™ U Dimmable Driver

High-performance LED driver with smooth dimming, stable output, and universal compatibility with popular controls and systems.

- Universal dimming support (ELV, Triac, and 0–10V)
- No minimum load
- 100–277VAC universal input
- 0.1% Performance dimming

For more information, visit us at:

[Hyperlink Goes Here](#)

SKU	General Specs	Input Voltage / Frequency	Output Voltage & Maximum Load	Minimum Load
LCI-BNCU-24V30W-J	Class 2, Dimmable 6.5 x 3.7 x 1.57 in.	100–277VAC, 50/60Hz	24V / 30W	None
LCI-BNCU-24V60W-J	Class 2, Dimmable 7.4 x 3.7 x 1.57 in.	100–277VAC, 50/60Hz	24V / 60W	None
LCI-BNCU-24V96W-J	Class 2, Dimmable 8.66 x 3.7 x 1.57 in.	100–277VAC, 50/60Hz	24V / 96W	None
LCI-BNCU-24V200W-J	Dimmable 10.24 x 4.13 x 1.77 in.	100–277VAC, 50/60Hz	24V / 200W	None
LCI-BNCU-24V300W-J	Dimmable 10.95 x 4.33 x 1.92 in.	100–277VAC, 50/60Hz	24V / 300W	None

VLM Series Constant Voltage Driver

Compact constant-voltage LED driver best utilized in dynamic applications.

- Compatible with PWM low voltage dimming systems
- Provides power for DMX integrated systems
- UL Listed junction box
- Small form factor

For more information, visit us at:

[Hyperlink Goes Here](#)

SKU	General Specs	Input Voltage / Frequency	Output Voltage & Maximum Load	Minimum Load
LCI-VLM-24V60W-J	Class 2 8.19 x 2.94 x 1.31 in.	120 / 277VAC, 47 - 63Hz	24V / 60W	None
LCI-VLM-24V100W-J	Class 2 8.19 x 2.94 x 1.31 in.	120 / 277VAC, 47 - 63Hz	24V / 96W	None



TRUE FOCUS™

Linear Grazer Fixture

Linear grazer fixture with precise beam control. Graze with near-zero glare in a small form factor.

<https://qrco.de/bfWcJV>



Safety

Driver in Junction Box: E550960 cULus Listed 2108, LED Low Voltage Power Units, CAN/CSA C22.2, Class 2 Power Supply, Nema1 Enclosure. Patent. <https://led-patent.com/>

Title 24 JA8/JA10 Compliant

Environment

Outdoor / Wet Location

Warranty

5 Year Limited Warranty

This warranty does not include the additional accessories referenced in this specification sheet. Complete warranty details for fixtures and additional accessories are available at www.diodeled.com/limited-warranty/ within the Policies section. For warranty related questions please contact product support.

Elemental LED, Inc. stands behind its products when they are used properly and according to our specifications. By purchasing our products, the purchaser agrees and acknowledges that lighting design, configuration and installation is a complex process, wherein seemingly minor factors or changes in layout and infield adjustments can have a significant impact on an entire system. Choosing the correct components is essential. Elemental LED is able to work with the original purchaser to make an appropriate product selection to the extent of the limited information that the customer can provide, but it is virtually impossible for Elemental LED to design a system that foresees every unknown factor. For this reason, this Warranty does not cover problems caused by improper design, configuration or installation issues. Any statement from a Elemental LED employee or agent regarding a customer's bill of goods and/or purchase order is NOT an acknowledgment that the products purchased are designed and configured correctly. The purchase agrees and acknowledges that it is the customer's responsibility to adhere strictly to all information contained in the Product Specification Sheets.

There is often more than one way to design, configure and layout an LED lighting application properly to achieve the same lighting effect. Elemental LED strongly recommends that licensed professionals be used in the design and installation of lighting systems that include Elemental LED products. The specifications include important information that a designer and installer should carefully review and strictly follow. Qualified designers and certified and/or licensed installers, with access to the final installation environment, customer goals, and Elemental LED product specifications can make the requisite decisions appropriate for a successful finished lighting application.

Safety / Warnings / Disclosures

- Install in accordance with national and local electrical code regulations.
- This product is intended to be installed and serviced by a qualified, licensed electrician.
- Only use copper wiring. Use wires rated for at least 176°F (80°C) and certified for use with external connection of electrical equipment.
- Tape light, attached wire leads, and additional extension cables, connectors, etc., are not rated for in-wall installation unless otherwise noted. Tape light and attached wire leads are field-cuttable.
- Ensure applicable wire is installed between driver, fixture, and any controls in-between. When choosing wire, factor in voltage drop, amperage rating, and type (in-wall rated, wet location rated, etc.). Inadequate wire installation could overheat wires, and cause fire.
- Do not install in environment where excessive heat may exist (ex. close proximity to fireplace, etc.) See Ambient Temperature ratings
- Do not modify product beyond instructions or warranty will be void.
- Tape light must be handled with care. Excessive handling, bending, and pressure may damage the product, voiding the warranty.
- Actual color may vary from what is pictured on this sheet and other print materials due to the limitations of photographic processes.
- We reserve the right to modify and improve the design of our fixtures without prior notice. We cannot guarantee to match existing installed fixtures for subsequent orders or replacements in regards to product appearance, CCT, or lumen output.

- Lumen value measured in accordance to IES LM-79-08. LED chips have a luminous flux range with a tolerance of +/- 5%.
- Each maximum run requires a dedicated power feed from the driver. Do not extend beyond the recommended maximum run length. Max run may exceed Class 2 limit. Actual wattage may differ from calculated wattage due to voltage drop across run.
- Do not install product in an environment outside the listed ambient temperature. Exceeding the maximum ambient temperature may damage LED chips, reduce the total lamp life, lumen output, and/or adversely impact color consistency.
- Actual efficacy value is dependent to specified LED driver (power supply). An estimated efficacy value can be calculated as follows: Lumen value divided by average power consumption per foot.
- Operating temperature is measured according to the minimum and maximum ambient temperature environment.